

Pricing: All items featured in our catalog are priced at Retail, Triple Keystone based on a \$400.00 Gold Market and a \$6.00 Silver Market. All items will be billed out at current market on the day the items are shipped. All prices are subject to change without notice. We reserve the right to correct any errors in this catalog.

Product Specifications: Gem Weights are based on the average weights of all gems in that item. Metal Weights (Pennyweights or Grams) are based on the average weights of all metal components in that item (includes ear backs, posts, etc.). Most of our items are available in Sterling Silver, 14kt & 10kt Gold and in a large selection of gemstones. Please contact our office for additional information and pricing.

Discounts: We offer volume discounts and also offer seasonal and/or program specials. Please contact us for additional information.

Returns: Please contact KDI for an RA# (Return Authorization). Always send merchandise back with detailed information – Store Name, Invoice #, Reason for Return and instructions on whether to Repair/Replace/Credit so we can process it in a timely manner.

Terms: Our terms are net 30 days. Balances over 60 days past due will automatically be placed on COD.

KDI Designs, Inc.
PO Box 39042
Greensboro, NC 27438-9042
Phone: 336.292.3235
Fax: 336.856.2630
Web: www.kdi-designs.com

2005 CATALOG

KDI
Designs
Simply Elegant Gemstone Jewelry



KDI Designs, manufacturers of 14kt, 10kt and Sterling Silver gemstone jewelry proudly presents their first catalog. Our focus is to produce simply elegant gemstone jewelry set with a large variety of gemstones including precious, semi-precious, exotic, opaque, coated topaz (Mystic) and pearls.

In addition to our separate pieces, we also offer a selection of boxed sets including earring stud sets, earrings with matching pendants, earring / pendant / ring ensembles, stack rings, etc. This gives your customer an ideal purchase for a great price point.

Requests are welcome and we will do our best to accommodate you with your needs.

We offer excellent service and our main priority is to make your ordering as easy as possible.

Thank you for your interest in KDI designs and we look forward to doing business with you.

Bracelets & Ensembles

KTE206R-EM \$153.75
.41TGW (.01DTW)

KTB1050-EM \$288.00
129TGW (.04DTW)
7 1/4" Length

KTN206R(1)-EM \$200.00
1.11TGW (.005DTW)

KTB119R-RU \$484.25
1.43TGW (.075DTW)
7" Length

KFB113R-RU \$752.50
2.97TGW (.33DTW)
7 1/4" Length

KTB1160-OP \$331.75
2.86CTW
7 1/4" Length

KTB1060-SA \$247.00
2.73TGW (.01DTW)
7 1/4" Length

KFB1030-MC \$567.00
(BT1/PE/CI/RH) 4.97TGW (.09DTW)
7" Length

KFB1080-RH \$446.50
5.55TGW (.05DTW)
7 1/8" Length

KTB1090-BO \$504.00
5.60TGW (.10DTW)
7" Length

KTE1130-BO \$148.50
1.82TGW (.02DTW)

KTR1130-BO \$131.50
1.22TGW (.02DTW)

KTE104C-CS \$156.00
(OP/RH) 2.92TGW

KFR212R-RU \$149.50
.36TGW (.01DTW)

KTN1130(1)-BO \$128.25
1.22TGW (.02DTW)

(see page 14 for KDI Coding System details and a listing of gemstone abbreviations)

Whether as single pieces or as a beautiful ensemble, let KDI Designs add a "Simply Elegant" touch to your stores inventory.

KSB1170-QZ8 \$83.75
9.10CTW
7 1/2" Length

KSE2140-QZ8 \$33.00
3.30CTW

KSE175R-SA \$24.25
.28CTW

KSN175R(1)-SA \$35.75
.35CTS

KSB140R-SA \$171.25
4.20CTW
7 1/2" Length

KSN1500(1)-QZ8 \$52.75
5.40CTS

KSR1200-QZ8 \$59.00
2.95 TGW (.72CTS WT Melee)

KSB165R-BT1 \$131.00
6.66TGW
(1.44CTS in WT Accents)
7 1/4" Length

KSR165R-BT1 \$28.00
.74TGW (.16CTS in WT Accents)

KSN165R(1)-BT1 \$36.75
1.18TGW
(.11CTS in WT Accents)

KSE165R-BT1 \$41.50
1.32TGW
(.16CTS in WT Accents)

KSB1190-AB \$70.50
18.20CTW
7 3/4" Length

KSR1190-AB \$26.25
2.60CTS

KSE1190-AB \$29.50
5.20CTW

(all pendants priced with 18" chain unless otherwise noted)

KSN1190(1)-AB \$27.50
2.60CTS

KSR1135-AM \$24.50
.55CTS

KSE1135-AM \$32.25
1.10CTW

KSN1135(1)-AM \$31.50
.80CTS

KSB1135-MC \$93.00
(AM/BT1/CI/GA/PE) 3.82TGW
7" Length

KSB130R-GA \$81.00
7.59CTW
7 1/4" Length

KSE130R-GA \$26.00
.92CTW

KSN130R(1)-GA \$31.75
.98CTW

KFN156R(1)-PE \$118.50
.90CTS

KTN203R(1)-BTC \$134.50
(BT3/BT1/BT4)
3.56TGW

KFN135R(1)-CS \$114.50
(RH/AM/IO)
.73TGW

KFN175R(1)-RU \$150.00
.35CTS

KFN148R(1)-EM \$168.00
.11CTS

KFN300R(1)-GA \$104.75
2.45CTS

KFE265R-EM \$37.25
.22CTW

KFR118R-GA \$195.00
1.95CTW

KFE300R-GA \$59.25
3.30CTW

KFB110R-SA \$1069.50
4.56CTW
7" Length

KFE405R-AM \$178.75
.20CTW

KFB112R-AM \$697.50
3.08TGW (.33DTW)
7 1/4" Length

KFE118R-CI \$35.00
.50CTW

KFE156R-PE \$90.50
1.80CTW

KTE196R-BTC \$109.75
(BT3/BT1/BT4)
3.86TGW

KFE136R-CS \$107.75
(RH/AM/IO)
1.44TGW

KFE175R-RU \$102.00
.28CTW

KTR110R-RU \$146.00
.725TGW (.005DTW)

KFE270R-SA \$51.00
.70CTW

KFR405R-AM \$200.00
.25CTS

KTE217R-CS \$129.25
(RH/AM/IO) 1.46TGW

KTS220R-CS \$119.75
(TC12/WT/TC9) 6.30CTW

KTE135R-CS \$63.50
(PE/BT1/AM) 1.64TGW

KFE101R-RH \$56.50
1.30CTW

KFE103R-CZ \$34.75
1.64CTW

KFN280R(2)-RH \$122.50
1.43CTW
16" Chain

KTE215R-TC12 \$96.00
2.10CTW

KFN405R-AM \$179.75
.25CTS

KSS102R-CS \$78.00
(PL/WT/CI/BT3/AM/PE/GA)
7.00TGW

KSN135R(1)-CS \$43.25
(AQ/RH/IO) 1.00TGW

KSN111R(1)-RU \$74.50
1.35CTW

KSN401R(1)-CS \$41.50
(BT3/RH) 3.80TGW

KSN400R(1)-CS \$28.50
(AM/EM) .64TGW

KSN402R(1)-CI \$32.00
.65CTW

KSN300R(1)-BT3 \$27.00
2.50CTS

KSN203R(1)-CS \$51.00
(AM/PE/BT1) 3.15TGW

KSN148R(1)-RU \$36.75
.14CTS

KSE196R-CS \$59.75
(AM/PE/BT1)
3.70TGW

KSE128R-RU \$32.00
.28CTW

(see page 14 for KDI Coding System details and a listing of gemstone abbreviations)



KSE136R-CS \$66.00
(RH/AM/IO) 1.44TGW

KSE135R-CS \$39.00
(PE/CI/GA) 1.90TGW

KSE155R-AM \$36.00
.80CTW

KSE115R-GA \$32.75
2.20CTW

KSA107R-EM \$28.25
.26CTS, 9" Adjustable Anklet

KSE405R-EM \$31.75
.22CTW

KSR401R-CS \$53.00
(BT3/RH) 3.80TGW

KSN155R(1)-AM \$34.50
.80CTS

KSN115R(1)-GA \$25.25
1.65CTS

KSR400R-CS \$29.25
(AM/EM) .64TGW

KSR405R-EM \$34.00
.26CTS

KSN405R(1)-EM \$40.00
.26CTS

KSB107R-RU \$26.75
.26CTS, 6" Adjustable Bracelet

KSE401R-CS \$57.25
(BT3/RH)
3.70TGW

KSE400R-CS \$41.50
(AM/EM)
1.28TGW

KSE402R-CI \$26.00
.80CTW

KSE107R-BT3 \$18.50
2.10CTW

KSE196R-CS \$59.75
(AM/PE/BT1)
3.70TGW

KSE128R-RU \$32.00
.28CTW



KFN4060(1)-AM \$151.25
.43CTS

KFB1160-AM \$389.50
4.30CTW
7 1/4" Length

KFE4060-AM \$144.00
.86CTW

KFN3980(1)-PE \$104.00
1.50CTS

KTE1540-RH \$38.00
1.10CTW

KTR105H-TC9 \$134.75
.91TGW (.01DTW)

KFN1500(1)-CI \$218.25
5.40CTS

KFR100P-IO \$278.00
.695TGW (.045DTW)

KFE3980-PE \$72.00
1.70CTW

KTN1040(1)-SA \$115.00
.60CTS

KTE110H-GA \$46.50
3CTW

KTR1220-TC12 \$144.00
1.02TGW (.02DTW)

KTN1280(1)-BT1 \$146.00
.56CTS (.01DTW)

KFE138P-IO \$82.25
1.30CTW

KFR150C-CS \$174.75
(BT3/SA) 1.28TGW

KTE1040-SA \$117.00
.66CTW

KTN110H(1)-GA \$75.75
1.50CTS

KTR1060-CI \$179.75
1.00CTS

KFE1310-BT4 \$142.75
2CTW

KFE300P-TC16 \$96.25
3CTW

KFE2300-CS \$247.00
(IO/AQ) 3.90CTW

KFR1210-EM \$246.50
1.02TGW (.02DTW)

KFN300P(1)-TC16 \$120.50
2.25CTW

KFE2330-RU \$126.00
1.10CTW

KTR1010-OP \$199.50
1.50CTS

KFE1530-BT1 \$46.25
1.10CTW

KFN148P(1)-QZ8 \$170.50
2.76TGW (.01DTW)

KFE148P-QZ8 \$164.50
3.12TGW (.02DTW)

KTN1010(1)-OP \$223.00
1.50CTS

KTE1010-OP \$202.50
1.50CTW

(all pendants priced with 18" chain unless otherwise noted)

(see page 14 for KDI Coding System details and a listing of gemstone abbreviations)

Our "Simply Elegant" touch goes a long way in giving your customer the exceptional and quality jewelry they deserve.



KSS1600-CS \$71.00
(AM/BT3/CI/PE/WT)
4.92TGW

KSN4060(1)-RU \$45.75
.55CTS

KSN3000(1)-TC9 \$43.75
1.98CTS

KSE4060-RU \$42.00
1.10CTW

KSN100P(1)-TC12 \$43.00
2.25CTS

KSR1100-SA \$25.75
.34CTS

KSN3000-TC9 \$50.25
2.70CTW

KSN1010(1)-BT3 \$44.25
3.20CTS

KSA100H-CZ \$31.75
9" Anklet,
2.10CTS

KSR4060-RU \$39.50
.55CTS

KSE100P-TC12 \$48.25
3.00CTW

KSN1500(1)-WT \$51.25
7.75CTS

KSB110H-GA \$24.25
1.50CTS
7" Adjustable Bracelet

KSR3000-TC9 \$57.00
2.88CTS

KSE1010-BT3 \$45.50
3.00CTW

KSR1060-TC12 \$46.50
1.50CTS

KSR150C-CS \$44.00
(TC12/WT)
1.26TGW

KSE1500-WT \$78.00
14.00CTW

KSN1040(1)-BT4 \$33.50
.55CTS

KSE1300-PE \$36.50
1.80CTW

KSE1530-BT3 \$18.00
1.10CTW

KSE1040-BT4 \$43.75
.60CTW

KSN1210(1)-CI \$38.75
1.65CTS

KSB1220-GA \$76.75
9.35CTW
7 1/2" Length

KTE258R-CS \$122.75
(PL/CO) 6-6.5, 4, 5-5.5 & 6.5mm



KFE1160-CS \$125.50
(RU/PL3A) 1.5 & 6-6.5mm
.18CTS in Ruby Accents



KFN200R(1)-PL1A \$135.25
5mm



KFE200R-PL1A \$119.00
4mm

KFE143R-PL2C \$52.50
6-6.5mm



KFE150R-PL2A \$71.75
5-5.5mm



KTS201R-PL1A \$47.00
(3mm Ball Studs, 12mm Hoops, 3mm Pearls) Boxed Set



KFE160R-PL2C \$85.50
6-6.5mm



KTE201R-PL1B \$96.25
4mm (.01DTW)

KTN205R(1)-PL2A \$125.25
5mm (.02DTW)

KFN160R(2)-PL2D \$107.50
6-6.5mm
16" Chain

KFN1230(1)-PL3A \$95.25
7-7.5mm



KTE205R-PL2A \$109.75
4mm (.03DTW)



KFN181R(2)-PL2C \$134.75
6-6.5mm (.04DTW)
16" Chain

KFE1220-PL3A \$46.00
6-6.5mm



KFE176R-PL2C \$109.00
5-5.5mm (.06DTW)



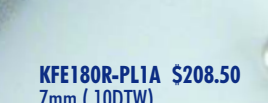
KTR170R-PL1E \$151.75
5-5.5mm (.06DTW)



KFN180R(2)-PL1A \$168.00
7mm (.05DTW)
16" Chain



KFE180R-PL1A \$208.50
7mm (.10DTW)



KFN1250(1)-PL3A \$142.75
7-7.5mm



KFE1280-PL3A \$115.50
7-7.5mm



KFS143R-PLC \$69.00
6-6.5mm

KTE113R-CS \$65.50
(10/PL2E) 2 & 5-5.5mm



KSS235R-CS \$47.25
(PL2A/PL2B/WT/10)
1.06TGW
4 & 6-6.5mm



KSE141R-PL2B \$18.50
6-6.5mm



KSN141R(1) PL2B \$21.00
6-6.5mm



KSN1260(1)-PL3A \$28.50
7-7.5mm



KSN1250(1)-PL3B \$39.25
7-7.5mm



KSE1240-PL3A \$40.00
7-7.5mm



KSN140R(1)-PL2D \$20.25
5-5.5mm



KSE123R-PL2C \$22.50
7-7.5mm



KSE140R-PL2D \$17.25
5-5.5mm



KSE1280-PL3B \$36.00
7-7.5mm



KSE1280-PL3B \$55.75
4mm

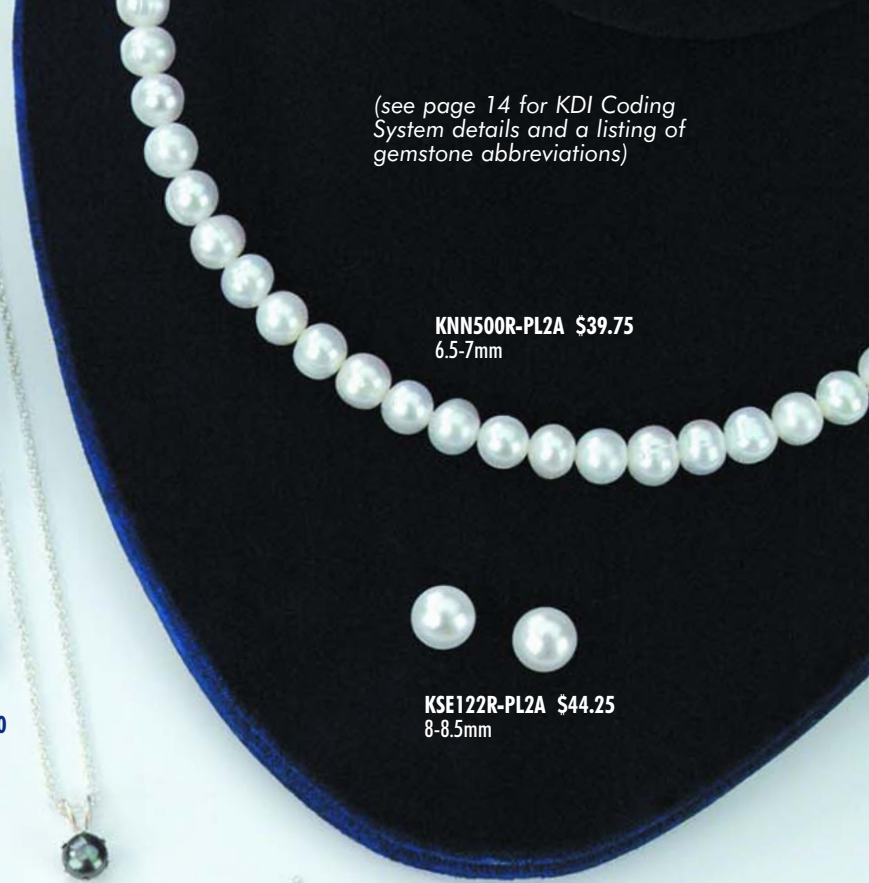


KSS208R-CS \$26.50
(Silver Ball/PL2A/CZ) 1.64CTW
6mm



(see page 14 for KDI Coding System details and a listing of gemstone abbreviations)

KNN500R-PL2A \$39.75
6.5-7mm



KSE122R-PL2A \$44.25
8-8.5mm



KFE139R-TQ \$78.75
1/2 Hoops, 10mm



KFS143R-CS \$62.00
(CA/BO/JA1) 6mm



KFE1310-CA \$126.78
1.36CTW



KFE116R-CS \$127.50
(EM/JA1) .12CTW in Emerald
8mm



KSS126R-CS \$40.25
(CO/Silver Ball/JA1)
6mm



KSB1170-JA1 \$99.00
9.52CTW
7 1/2" Length



(see page 14 for KDI Coding System details and a listing of gemstone abbreviations)

KSN1190(1)-RO \$29.50
10.00CTS

KSE170R-CS \$46.50
(AM/JA2) 5 & 8mm



KTE260R-CH \$84.50
5, 4 & 8mm



KTE200R-JA1 \$89.00
4mm



KFR105R-RO \$187.50
4 & 5mm



KTE127R-RO \$39.25
6mm



KTR105R-CS \$153.75
(LA/CH) 4 & 5mm



KFN126R(1)-CA \$124.50
10mm



KFE125R-CS \$65.00
(IO/CH) 3.20TGW
3 & 6mm



KFE231R-LA \$116.50
10mm



KSM182R(11F)-JA1 \$37.25
10mm & 8mm
18" Olive Leather



KSE230R-RO \$22.75
10mm



KSN1010(1)-CO \$52.50
2.20CTS



KSR1010-CO \$47.50
2.20CTS



KFE2090-MO1 \$49.50
3.10CTS



KFE1500-LA \$260.25
10.00CTW



KTN1500(1)-LA \$137.25
5.00CTS



KSE200R-CH \$35.50
4mm



KSR1190-TE \$26.75
8.00CTS



KSE1300-LA \$34.25
1.36CTW



KSN126R(1)-CH \$27.25
10mm



KSE1190-TE \$32.25
16.00CTS



KSE350P-BO \$32.25
3.00CTW



KSN167R(7A)-SB \$16.25
10mm Bead
18" Silk Cord



KSE100P-BO \$23.25
2.00CTW

KSN100P(1)-BO \$23.00
1.40CTS



KSE231R-SN \$39.00
10mm



KSN3500(9)-MO3 \$37.25
6.00CTS
18" Rubber Cord



(all pendants priced with 18" chain unless otherwise noted)

(see page 14 for KDI Coding System details and a listing of gemstone abbreviations)

KSE325-NS \$24.00
23x33mm, 3mm Tubing

KTR111-DI \$103.50
(.015DTW)

KTE111-DI \$84.25
(.01DTW)

KTB107-DI \$234.50
(.02DTW)
7" Length

KTN111(2)-DI \$93.25
(.005DTW)
16" Chain

KFB101-DI \$530.00
(.50DTW)
7" Length

KTR115-DI \$86.75
(.03DTW)

KFB105-DI \$314.00
(.045DTW)
7" Length

KTN115(2)-DI \$95.25
(.03DTW)
16" Chain

KFS200-DI \$66.25
(3mm Ball Studs, 12mm Hoops,
.02DTW Studs)
Boxed Set

KTE115-DI \$100.00
(.06DTW)

KSB015-NS7 \$20.75
4mm
7" Length

KFE005-PB \$26.50
5mm

KFN120(1)-DI \$204.00
(.05DTW)

KXE266-DI \$37.50
14KT White Gold
(.03DTW)

KXE007-PB \$44.50
7mm

KTR111-NS \$55.50

KSE006-PB \$6.75
6mm

KTR113-NS \$66.00

KSE005-PB \$6.00
5mm

KTR109-NS \$61.25

KTR105-DI \$68.00

KSR111-NS \$18.00

KSR113-NS \$18.00

KSR109-NS \$18.00

KSR105-DI \$20.75

KSR112-NS \$18.00

KTR114-NS \$18.00

KSN168(2)-PB \$11.50
8mm
16" Chain

KSN110R(2)-NS \$19.00
8mm
16" Chain

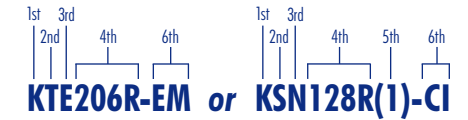
KSN167(1)-SB \$16.50
10mm

(all pendants priced with 18" chain unless otherwise noted)

KDI CODING SYSTEM

KDI Item Number

- 1ST K (For KDI Designs)
 2ND METAL CODE: 14kt (F), 10kt (T), Sterling Silver (S), etc. (See letter codes below)
 3RD ITEM DESCRIPTION CODE (See letter codes below)
 4TH GEMSTONE SHAPE CODE (See number/letter codes below)
 5TH CHAIN DESCRIPTION: Type and Length (See number codes below)
 6TH GEMSTONE ABBREVIATION (See number/letter codes below) or TEXTURES/FINISHES (See letter codes below)



Examples: **KTE206R-EM** or **KSN128R(1)-CI**

METAL CODES

- E 18KT
 F 14KT
 T 10KT
 S Sterling Silver
 X 14kt White
 Z 10kt White
 N No metal

ITEM DESCRIPTION CODES

- B Bracelets
 E Earrings
 M Ear/Pendant Sets
 N Necklaces
 P Pendants
 R Rings
 S Sets - Assorted

GEMSTONE SHAPE CODES

- 100C - 999C Combination of shapes
 100E - 999E Emerald Cut
 100H - 999H Heart
 100M - 999M Marquise
 100O - 999O Oval
 100P - 999P Pear
 100R - 999R Round
 100S - 999S Square
 100T - 999T Trillion

CHAIN DESCRIPTION

- (Types/lengths of Chain, Cord, Rubber used)
 1 18" Rope
 2 16" Rope
 3 18" Snake
 4 16" Snake
 7 18" 2mm Silk
 8 16" 2mm Silk
 9 18" 2mm Rubber
 10 16" 2mm Rubber
 11 18" 1.5mm Leather
 12 16" 1.5mm Leather

See Colors Listed Below

GEMSTONE ABBREVIATIONS*

Code	Gemstone	Code	Gemstone
AB	Abalone, Natural Mexican	MU	Mussel Shell, Pink (Dyed)
AM	Amethyst	MO1	Mother Of Pearl Black
AQ	Aquamarine	MO2	Mother Of Pearl Genuine
AV	Aventurine, Green	MO3	Mother Of Pearl White
BO	Black Onyx	OP	Opal
BT1	Blue Topaz, Swiss	PL1A	Pearl, White FW Cultured
BT3	Blue Topaz, Sky	PL1B	Pearl, Black (Dyed) FW Cultured
BT4	Blue Topaz, London	PL1C	Pearl, Med. Pink (Dyed) FW Cultured
CA	Carnelian	PL1D	Pearl, Peach (Natural) FW Cultured
CH	Chalcedony	PL1E	Pearl, Purple/Mauve (Natural) FW Cultured
CI	Citrine	PL1F	Pearl, Pink/Purple (Dyed) FW Cultured
CO	Coral, Pink	PL1G	Pearl, Platinum (Dyed) FW Cultured
CZ	Cubic Zirconia	PL2A	Pearl, White - Button
DI	Diamond	PL2B	Pearl, Black (Dyed) - Button
EM	Emerald	PL2C	Pearl, Medium Pink (Dyed) - Button
GA	Garnet	PL2D	Pearl, Peach (Natural) - Button
HE	Hematite	PL2E	Pearl, Purple/Mauve (Natural) - Button
IO	Iolite	PL2F	Pearl, Pink/Purple (Dyed) - Button
JA1	Jade, Green Nephrite	PL2G	Pearl, Platinum (Dyed) - Button
JA2	Jade, Lavender	PL3A	Pearl, White - Rice
JS	Jasper, Poppy	PL3B	Pearl, Black - Rice
LA	Lapis, Blue	PE	Peridot
LS	Leopard Skin	QZ8	Quartz, Smokey
MA	Malachite	QZ7	Quartz, Rose

Code Gemstone

RH	Rhodolite
RO	Rhodonite
RU	Ruby
SA	Sapphire
SN	Snowflake Obsidian
TZ	Tanzanite - Faceted
TE	Tiger's Eye, Brown
TC4	Topaz, Coated: Ecstasy
TC6	Topaz, Coated: Imperial Mystic Blue
TC9	Topaz, Coated: Pure Pink
TC10	Topaz, Coated: Mango Magic
TC12	Topaz, Coated: Mystic Green
TC16	Topaz, Coated: Twilight Mystic
TC22	Topaz, Coated: Mystic Universe
TC23	Topaz, Coated: Mercury Mist
TC24	Topaz, Coated: Neptune Garden
WT	Topaz, White
TO1	Tourmaline, Green
TO	Tourmaline, Pink
TQ1	Turquoise, Chinese
TS	Tsavorite
CS	Combo Stone - Combination of Gem Shapes & Colors
NS	No Gemstones
DI	Diamond Only, No Other Gemstones

*(NOTE: The following will be shown prior to the gemstone abbreviation code for special cuts: "I" for "Illusion Cut" "P" for "Princess Cut")

TEXTURES/FINISHES CODES

- NS Plain, No stones or beads
 NSPL No stones plus length of item
 PB Polished Bead or finish
 SB Stardust Bead or finish
 TW Twist design

COLORS OF LEATHER, RUBBER & SILK

Leather	Silk
A Black	A Black
B Brown (Dark Brown)	B Brown
C Violet (Purple)	C Purple
D Royal Blue	D Royal Blue
F Olive (Green)	F Dark Green
G Sienna	G Dark Grey
H Natural / Brown	H Coffee

Rubber
Black Only

Birthstone Month and Gemstone

	January / Garnet		June / Pearl
	February / Amethyst		July / Ruby
	March / Aquamarine		August / Peridot
	April / CZ Or Diamond		September / Sapphire
	April / White Topaz		October / Opal
	May / Emerald		November / Citrine
	June / Rhodolite		December / Blue Topaz

ASSORTED GEMSTONE WEIGHT ABBREVIATIONS WITHIN CATALOG

- CT Carat (1 gemstone)
 CTS Carats (1 gemstone / multiple carats)
 CTW Carat Total Weight (multiple stones of the same gem)
 TGW Total Gem Weight (combination of gems & dias. within one item)
 DTW Diamond Total Weight (within an item)